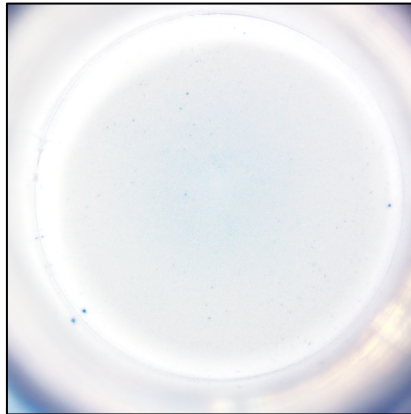


**U-CyTech B.V.**  
Yalelaan 42  
3584 CM Utrecht  
The Netherlands  
+31 85 073 1460  
info@ucytech.com  
www.ucytech.com

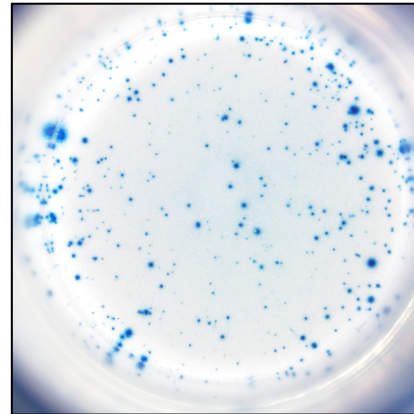
## Data sheet      Human IgM B cell ELISPOT kit

**Catalogue no.**      CT782-B5 (5-plate format)

**Species reactivity**      human



Total number of **spontaneously** IgM secreting cells ( $1 \times 10^5$  cells/well)



Total number of IgM secreting cells after R848/IL-2 ( $5 \times 10^4$  cells/well)

*Example of IgM specific spots produced by human PBMC*

B cell activation:      4 days preincubation ( $2 \times 10^6$  PBMC/ml) in absence (left) or presence (right) of recombinant IL-2 and R848.

Incubation on ELISPOT plate: 24 hours

