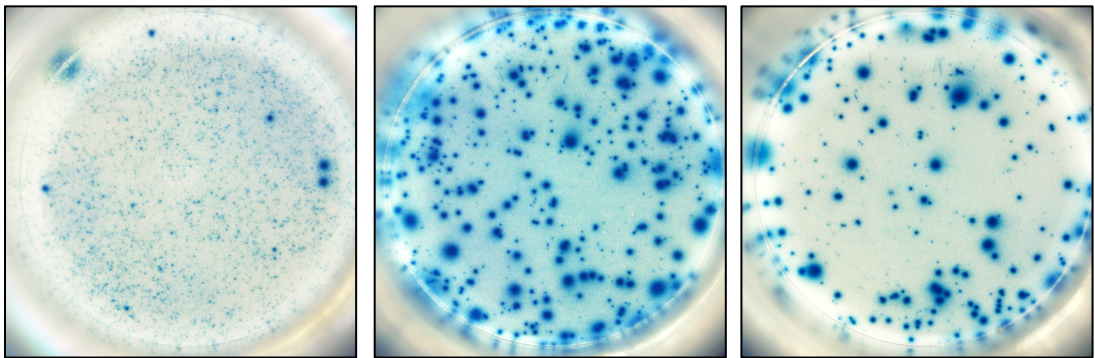


**U-CyTech B.V.**  
Yalelaan 42  
3584 CM Utrecht  
The Netherlands  
+31 85 073 1460  
info@ucytech.com  
www.ucytech.com

**Data sheet      Monkey IgG B cell ELISPOT kit**

**Catalogue no.**      CT785-B5 (5-plate format)

**Species reactivity**      rhesus macaque, cynomolgus monkey and baboon



Total number of **spontaneously** IgG secreting cells ( $5 \times 10^4$  cells/well)

Total number of IgG secreting cells after R848/IL-2 ( $5 \times 10^3$  cells/well)  $1 \times 10^4$  cells/well

Total number of IgG secreting cells after R848/IL-2 ( $5 \times 10^3$  cells/well)  $5 \times 10^3$  cell/well

*Example of IgG specific spots produced by rhesus macaque PBMC*

B cell activation:      5 days preincubation ( $2 \times 10^6$  PBMC/ml) in the absence (left) or presence (right) of recombinant IL-2 and R848.  
Incubation on ELISPOT plate: 24 hours

