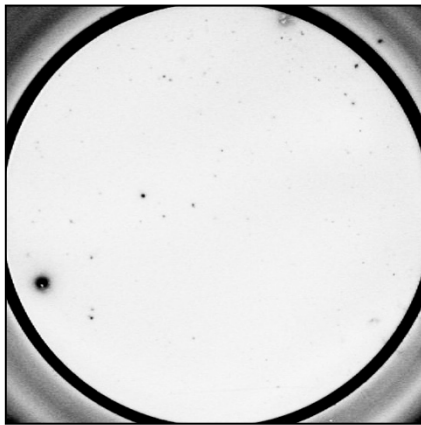


Typical data Human IFN- γ ELISPOT kit

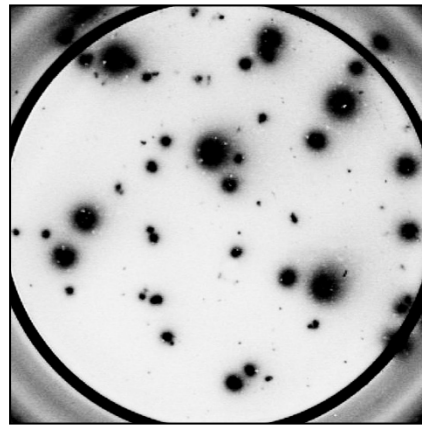
Catalogue no.: CT230-T2 (2-plate format)
 CT230-T5 (5-plate format)

Validated for:

Human



Stimulus: none (4×10^5 cells/well)



Stimulus: viral peptide pool (cat. no. CT370) (4×10^5 cells/well)

Example of IFN- γ specific spots produced by human PBMC.
 Preincubation: 42h, incubation ELISPOT: 20h.

References list:

- Arif, S., Tree, T.I., Astill, T.P., Tremble, J.M., Dayan, C.M., Roep, B.O. and Peakman, M. 2004. *J. Clin. Invest.* 113: 451-463
- Gerrits, J.H., van de Wetering, J., Drabbels, J.J., Claas, F.H., Weimar, W. and van Besouw, N.M. 2008. *Nephrol. Dial. Transplant.* 23: 2016-2023
- Grakoui, A., Shoukry, N.H., Woollard, D.J., Han, J.-H., Hanson, H.L., Ghayad, J., Murthy, K.K., Rice, C.M. and Walker, C.M. 2003. *Science* 302: 659-662
- Gholamin, M., Moaven, O., Farshchian, M., Mahmoudi, M., Sankian, M., Memar, B., Forghani, M.N., Malekzadeh, R., Rajabi-Mashhadi, M.T. and Abbaszadegan, M.R. 2010. *BMC Cancer*: 261
- Kloosterboer, F.M., van Luxemburg-Heijs, S.A.P., Willemze, R. and Falkenburg, J.H.F. 2004. *Human Immun.* 65: 328-339
- Martin, S., Wolf-Eichbaum, D., Duinkerken, G., Scherbaum, W., Kolb, H., Noordzij J.G. and Roep, B.O. 2001. *N. Engl. J. Med.* 345: 1036-1040
- Pflieger, C., Meierhoff, G., Kolb, H. and Schloot, N.C. 2010. *J. Autoimmun.* 34: 127-135
- Raz, I., Elias, D., Avron, A., Tamir, M., Metzger, M. and Cohen, I.R. 2001. *Lancet* 358: 1749-1753
- Shi, M., Qian, S., Chen, W.-W., Zhang, H., Zhang, B., Tang, Z.-R., Zhang, Z. and Wang, F.-S. 2007. *Clin. Exp. Immunol.* 147: 277-286
- Shoukry, N.H., Sidney, J., Sette, A. and Walker, C.M. 2004. *J. Immunol.* 172: 483-492
- Skowera, A., de Jong, E.C., Schuitemaker, J.H.N., Allen, J.S., Wessely, S.C., Griffiths, G., Kaspenberg, M. and Peakman, M. 2005. *J. Immunol.* 175: 7235-7243
- Vaessen, L.M.B., van Besouw, N.M., Mol, W.M., IJzermans, J.N.M. and Weimar, W. 2006. *Transpl. Immunol.* 15: 281-288