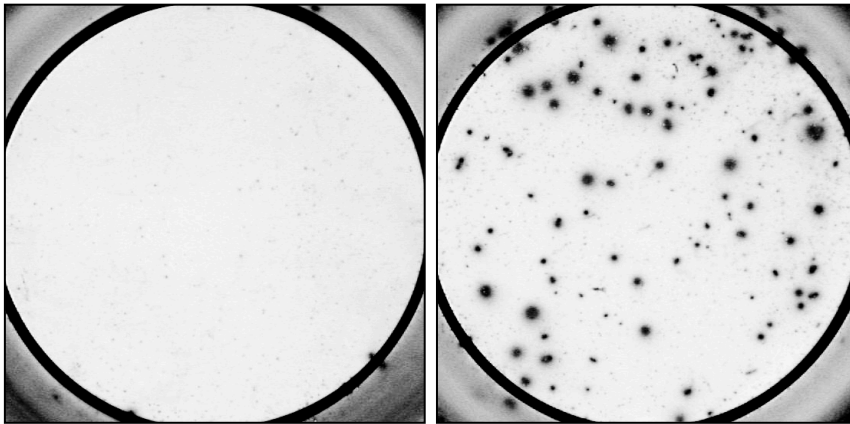


## Typical data Monkey IgG B cell ELISPOT kit

Catalogue no.: CT785-T5 (5-plate format)

### Validated for:

Rhesus macaque, Cynomolgus monkey and Baboon



Total number of IgG secreting cells  
 $1 \times 10^5$  cells/well (Assay I)  
Stimulus preincubation: none

Total number of IgG secreting cells  
 $4 \times 10^4$  cells/well (Assay I)  
Stimuli preincubation: IL-2 + R848

### Example of IgG specific spots produced by rhesus macaque PBMC.

B cell activation:  $2 \times 10^6$  cells/ml, 5 days preincubation without stimulus (left) or in the presence of recombinant IL-2 and R848 (right).

Incubation ELISPOT: 4 hours.